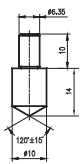


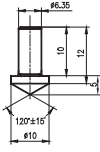
ROCKWELL TYPE HARDNESS TESTER CV-630™

Bench hardness tester with protruding nose for internal tests

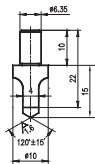
- Horizontally protruding nose type machine
- Tests on difficult to reach areas
- Tests on internal surfaces from 40mm diameter with standard indentor and 23mm with short indentor
- Tests on external surfaces down to 3mm diameter
- Automatic test cycle
- Clear matrix backlit LCD
- Data output to printer TA-220
- Easy menu selectable screens for display and control
- Four models of diamond indentors available:



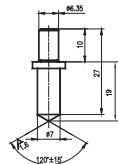
Standard



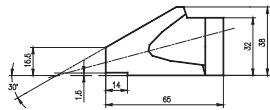
Short



Chisel



Slim



Dimensions of protruding nose



Rockwell load selector



Technical specifications

Hardness parameters	A, B, C, D, E, F, G, H, K, L, M, P, R, S, V
Hardness resolution	0.1 of a Rockwell unit
Test loads	10kgf preload / 60, 100, 150kgf total load
Display	Matrix backlit LCD
Language	English
Data entry	Membrane keypad, menu driven
Test cycle	Automatic
Load duration	Programmable dwell and recovery times 2-50sec
Data output	RS232 serial port for printer TA-220/computer
Menu features	Hardness tolerance setting (upper/lower limits) Conversions: Vickers, Brinell, Rockwell superficial, Leeb, UTS Statistical data: X-bar, S, R, max, min Automatic curvature correction for cylindrical and spherical surfaces
Standard	EN-ISO 6508, ASTM E-18
Specimen accommodation	Vertical space 250mm (10") Horizontal space (from centre-line) 150mm (6")
Specimen access	External surfaces Cylindrical surfaces down to 3mm diameter Internal surfaces from 40mm diameter with standard indentor and 23mm with short indentor
Power supply	220V or 110V, 50Hz
Machine dimensions	Width 225mm, depth 715mm, height 790mm
Machine weight	100kg

Standard delivery

- Main unit
- Diamond indenter
- Ball indenter 1/16"
- Spare balls 1/16" (5 pcs)
- Fixing screw for indentors
- Flat anvil 70mm diameter
- V-anvil 30mm diameter
- Hardness test block HRC
- Hardness test block HRB
- Power cable
- Certificate
- Manual

Optional accessories

- Short diamond indenter
- Chisel diamond indenter
- Slim diamond indenter
- Ball indenter 1/8"
- Ball indenter 1/4"
- Ball indenter 1/2"
- Flat anvil 225mm diameter
- Flat anvil 150mm diameter
- V-anvil large
- V-anvil flat
- Support fixtures
- Printer TA-220 with cable
- UKAS certified test blocks